

Moat's leadership and governance

Our Executive Team

- **Gavin Cansfield**
Chief Executive
- **Steve Nunn**
Executive Director: Growth
- **Carrie McKenzie**
Executive Director: People and Culture
- **Gloria Yang****
Executive Director: Finance
- **Marek Witko**
Executive Director: Housing and Customer Experience
- **David Betteridge**
Executive Director: Governance and Compliance
- **Garry Knights**
Executive Director: Property and Assets

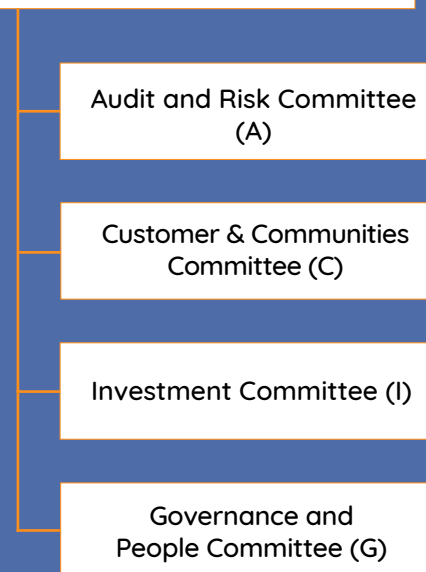
Our Board

- **Helen Evans**
NED Chair (G)
- **Gavin Cansfield**
Executive
- **Steve Nunn**
Executive
- **Gloria Yang**
Executive
- **Tim Boag**
NED (I*,G)
- **Caroline Ross**
NED (C*, G)
- **Jeremy Ellis**
NED (C, A)
- **David Brocklebank**
NED (I)
- **Andrew Farmer**
NED (A*, I)
- **Faith Locken**
NED (A)
- **Trafford Wilson**
NED (C)
- **Jeremy Stibbe**
NED (I, C)

* = Committee chairman / NED = Non-Executive Director

** Our Executive Director of Finance has responsibility for our compliance with the consumer standards

Moat Homes Limited



NHF Code of Governance adopted